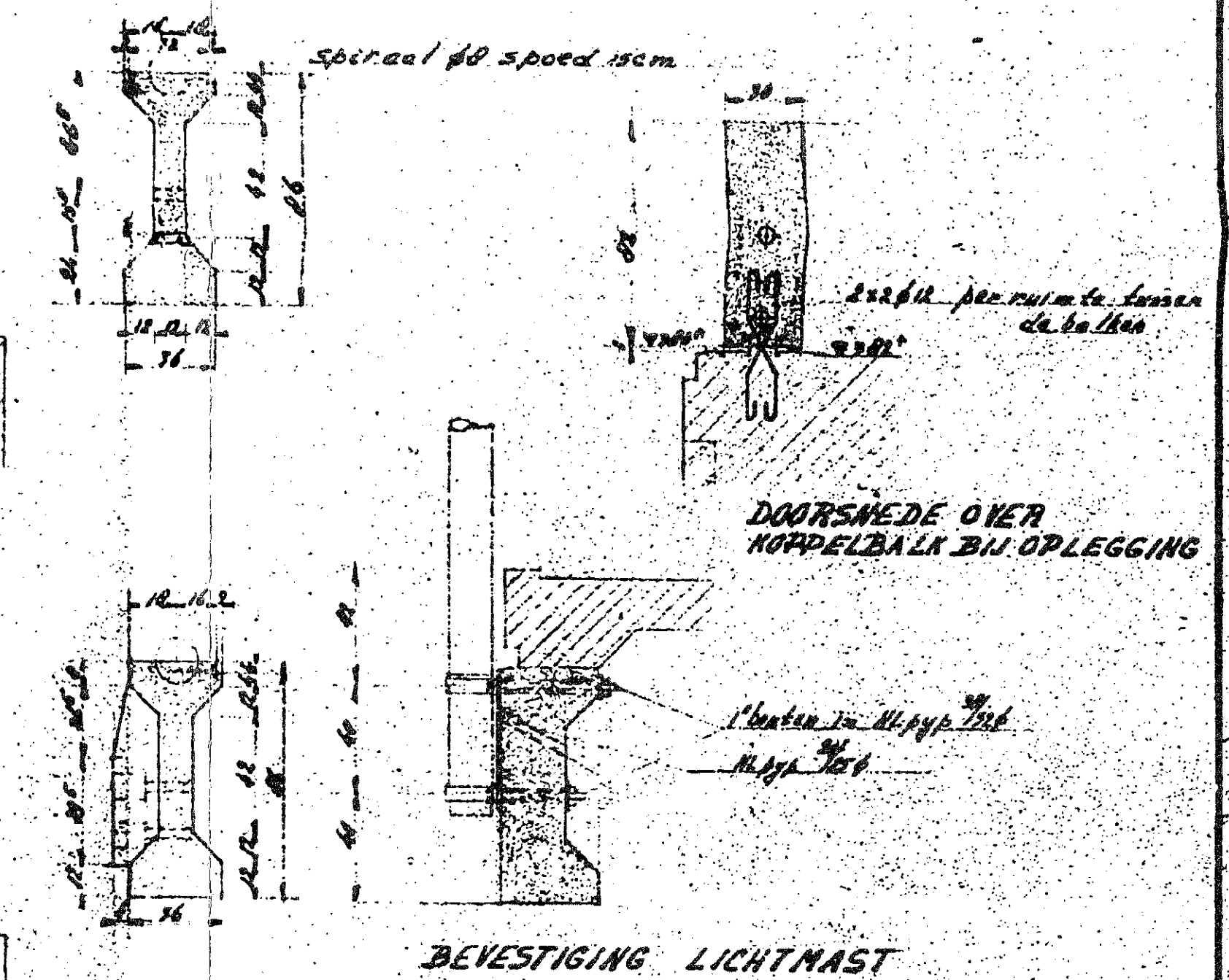
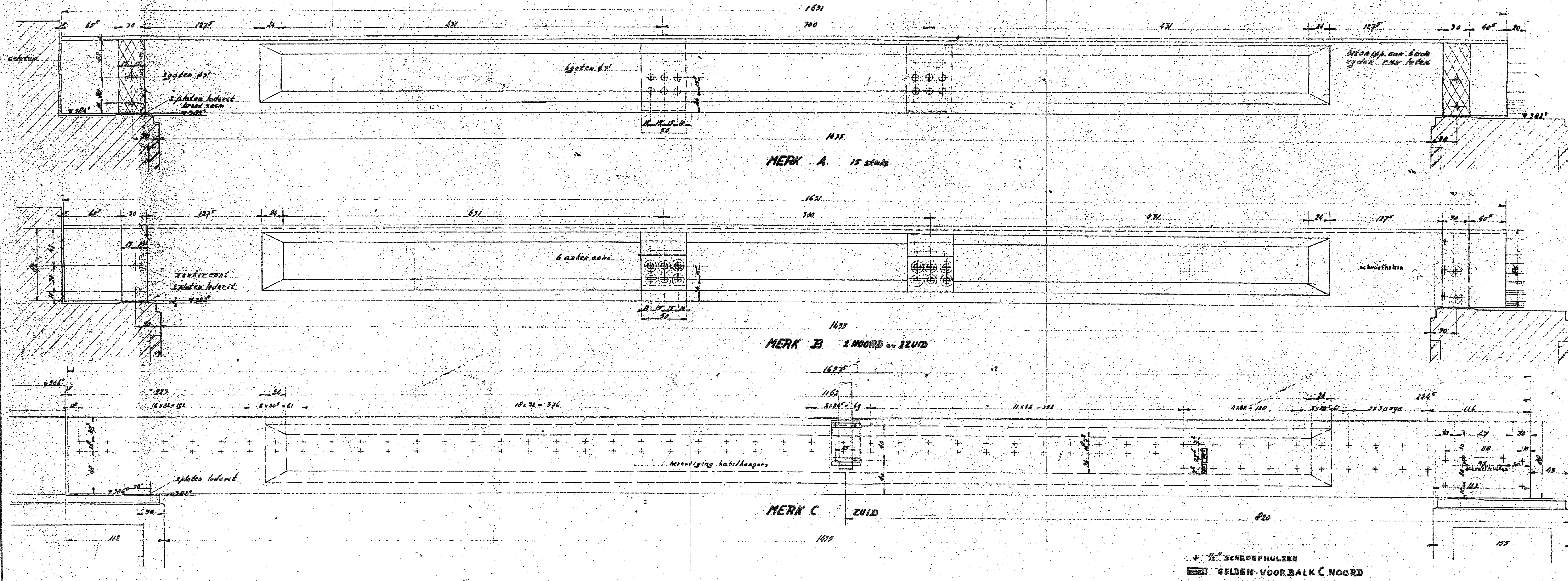


LANDHOOFD
WESTZIJDE

STROOMPIJLER



W.452.000800A

GERALPHEN & RIJN		DATUM	GET	COM
TWEDE RIJNOVERGANG				
AANBRUG		10-11-52	J.C.S.	X
BALKEN SPANBETON		10-10-52	J.C.S.	
		2-10-52	J.C.S.	
INGENIEURSBUREAU		SCHAAL	AFM	7-0-52
J. H. HASSELT & KONING		1: 20	30	8-0-52
NUMMER				
DE WERKLEID				

No. 467-101